

# RBC Bearings

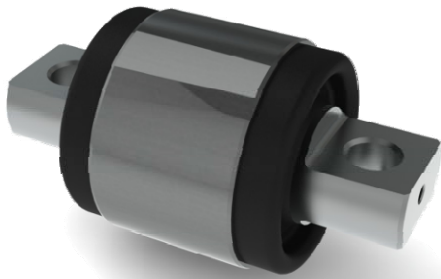
## SFiT™ Bearings

### INTRODUCING

### SFiT™ BEARINGS

by Schaublin

NEW



### Background

- Schaublin has developed and patented a design that allows the press fit installation of a pre-loaded spherical plain bearing
- This special design directs the flow of stress and prevents ball lock due to interference fit installation
- This design has been developed in order to eliminate the installation per bonding

### A Performance Solution

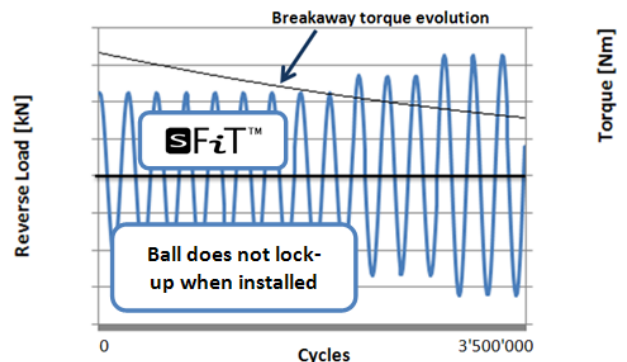
By using SFiT™ patented bearings, time and costs related to the installation are greatly reduced. The interference allowance is determined in order to permit the bearing interchange several times in the same housing.

- Various liner systems (Uniflon®-E, Uniflon®-VV...)
- Custom designs available

### Typical applications

- Railway applications: High Speed Trains, Intercity Trains, Trams, Metros
  - Secondary suspension joints
  - Anti roll bar linkages
  - Coach-to-coach dampers
  - Yaw dampers
- Heavy armored vehicles
- Other industrial and aerospace applications

### FATIGUE TEST Reverse load combined with $\pm 15^\circ$ swivel motion



### Advantages

SFiT™ Bearings are proven and demonstrate very high performance in reverse loading environment

- Qualified on train over many years
- High resistance to axial push out load
- Easy and quick replacement for maintenance and overhaul

**PATENTED**

# RBC Bearings

## Innovation, Commitment, Quality

RBC has been producing bearings in the USA since 1919. In addition to unique custom bearings, RBC offers a full line of standard industrial and aerospace bearings, including:



### Spherical Plain Bearings

Radial, angular contact, extended inner ring, high misalignment. **QuadLube®**, **ImpactTuff®**, **Spreadlock® Seal**, **CrossLube®**, **DuraLube™**, and self-lubricating bearing. Available in inch and metric sizes.



### Needle Roller Bearings

**Pitchlign®** caged heavy duty needle roller bearing, inner rings, **TJ TandemRoller®** bearings for long life.



### Thin Section Ball Bearings

Standard cross sections to one inch. Sizes to 40 inches. Stainless steel and other materials are available. Seals are available on all sizes and standard cross sections. Super duplex configurations.



### Self-Lubricating Bearings

Radial, thrust, rod ends, spherical bearings, high temperature, high loads. Available in inch and metric sizes. **Fiberglide®** self-lubricating bearings



### Tapered Roller Bearings

**Tyson®** case-hardened and through-hardened tapered roller bearings. Available in many sizes. Used in Class 8 heavy truck and trailer wheel bearings, gearboxes, and final drive transmissions.



### Airframe Control Bearings

Ball bearing types, self-lubricating types, needle roller track rollers.



### Tapered Roller Thrust Bearings

Case-hardened. Sealed and unsealed for truck, tractor, and construction equipment steer axles, and Class 8 trailer landing gear.



### Dowel Pins, Loose Needle Rollers, Shafts

**Precision Products** dowel pins, loose needle rollers, and shafts.



### Integrated Assemblies

For robots and other process tool applications. Engineering design assistance. Production volume capacity.



### Commercial Rod Ends

Commercial and industrial, precision, Mil-Spec series, self-lubricating, and aircraft. Sold under the **Heim®**, **Unibal®**, and **Spherco®** names. Available in inch and metric sizes.



### Cam Followers

Standard stud, heavy stud, yoke type, caged roller follower cam followers. Patented **RBC Roller®** cylindrical roller cam followers, **HexLube®** universal cam follower, airframe track rollers.



### Ball Bearings

Precision ground, semigrind, unground. High loads, long life, smooth operation. **Nice®** branded products are offered in caged and full complement configurations.



### Ball Pin Plain Bearing Assemblies

Self-lubricating types, greased plain bearings, sealed. High loads, high vibration resistant, long life. **BFIT®** and **CTM®** configurations available.



### Specials

RBC manufactures many specialty bearings for the aerospace, oil and energy, semiconductor equipment, packaging, transportation, and other industries.