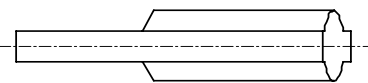
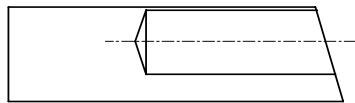
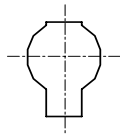



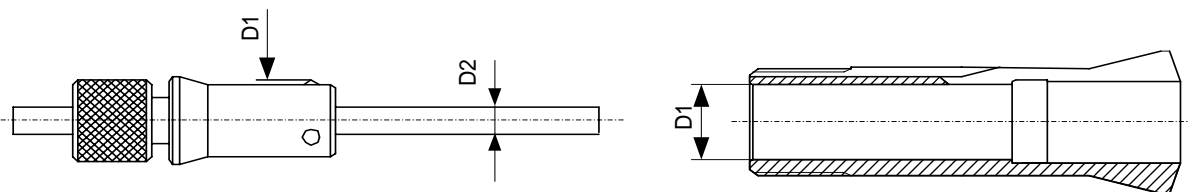


Obturbateurs pour pinces - Dichtgummi - Rubber seals



Art.	Type	Obtur.	Pos.			
72-01820	B 34	76-00832	50	> 11.99	> 11.99	> 9.99
			40	12.00 - max.	12.00 - max.	10.00 - max.
72-02007	B 46	76-00832	70	> 27.99	> 23.99	> 19.49
			60	28.00 - max.	24.00 - max.	19.50 - max.
76-00201	F 20	76-00832	10			
76-00071	F 22	76-00832	10			
76-00022	F 27	76-00832	50	> 20.99	> 18.00	> 15.00
			40	21.00 - max.	18.01 - max.	15.01 - max.
76-00063	F 30	76-00832	50	> 16.00	> 15.50	> 12.50
			40	16.01 - max.	15.51 - max.	12.51 - max.
76-00064	F 25	76-00832	10			
76-00087	F 20	76-00832	10			
76-00093	F 28	76-00832	50	> 14.99	> 12.99	> 10.99
			40	15.00 - max.	13.00 - max.	11.00 - max.
76-00221	F 32	76-00832	50	> 22.49	> 19.49	> 15.99
			40	22.50 - max.	19.50 - max.	16.00 - max.
76-00094	F 35	76-00832	70	> 7.99	> 7.99	> 7.99
			60	8.00 - max.	8.00 - max.	8.00 - max.
76-02010	F 35	76-00832	60			
76-02011	F 35	76-00832	40			
76-02012	F 35	76-00832	60			
76-02013	F 35	76-00832	60			
76-00072	F 38	76-00832	70	> 14.99	> 12.99	> 7.99
			60	15.00 - max.	13.00 - max.	8.00 - max.
76-02004	F 38	76-00832	70	> 14.99	> 12.99	> 10.59
			60	15.00 - max.	13.00 - max.	10.60 - max.
76-00099	F 42	76-00832	70	> 19.99	> 17.99	> 11.99
			60	20.00 - max.	18.00 - max.	12.00 - max.
76-00081	F 48	76-00832	70	> 23.99	> 7.99	> 7.99
			60	24.00 - max.	8.00 - max.	8.00 - max.
76-02006	F 48	76-00832	70	> 23.99	> 20.79	> 16.99
			60	24.00 - max.	20.80 - max.	17.00 - max.
76-00359	F 66	76-00836	100			
76-00830	F 16	M505220	Tuyau silicon dia. 4			
78-00334	P 25	M505220	Tuyau silicon dia. 4			
80-01923	W 25	M505220	Tuyau silicon dia. 4			

Butées de profondeur - Tiefenansschläge - Adjustable depth stops



Art.	D1 min - max	D2	Employée pour - Verwendet für - Used for
68-99100	3.90 - 4.40	1.2	B 8 ; F 6
68-99101	4.50 - 5.40	1.2	F 7 ; W 8 ; W 9
68-99102	5.40 - 6.60	1.5	F 7 ; F 8
68-99103	6.50 - 7.40	2	F 9 ; F 10 ; W 10
68-99104	8.00 - 8.80	2.5	W 12
68-99105	9.30 - 10.90	2.5	B 15 ; F 12 ; F 13 ; F 14 ; F 15 ; W 15
68-99106	12.00 - 13.80	2.5	F 16 ; L 20 ; W 16.5
68-99107	13.50 - 15.10	5	F 17.46 ; F 18 ; W 20
68-99108	15.00 - 16.80	5	B 23
68-99109	16.40 - 18.20	7	B 23 ; F 20 ; F 22 ; F 23.8
68-99110	16.50 - 19.95	5	W 25
68-99111	19.80 - 22.80	7	F 25 ; F 26
68-99112	22.00 - 23.80	7	F 27 ; F 28
68-99113	23.00 - 24.80	7	B 32 ; W 30
68-99114	24.60 - 27.80	7	F 30 ; F 32 ; W 31.75
68-99115	27.60 - 30.80	7	F 34 ; F 35
68-99116	30.00 - 33.80	7	F 38
68-99117	34.80 - 40.70	10	B 45 ; F 42
68-99118	39.80 - 44.70	10	F 48